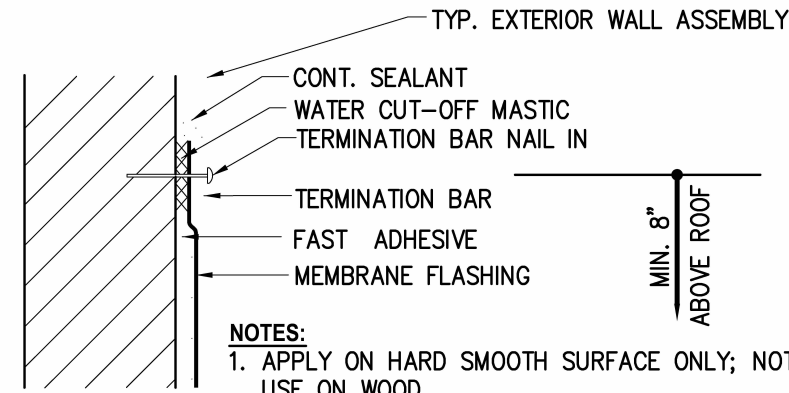
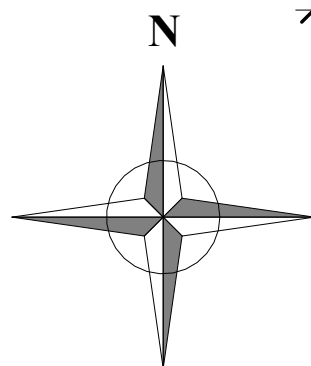


- NOTES:
1. WATER CUT-OFF MASTIC MUST BE HELD UNDER CONSTANT COMPRESSION.
  2. DO NOT WRAP COMPRESSION TERMINATION AROUND CORNERS.
  3. ALLOW 1/4" MINIMUM TO 1/2" MAXIMUM (6) SPACING BETWEEN CONSECUTIVE LENGTHS OF TERMINATION BAR.



- NOTES:
1. APPLY ON HARD SMOOTH SURFACE ONLY; NOT FOR USE ON WOOD.
  2. WATER CUT-OFF MASTIC MUST BE HELD UNDER CONSTANT COMPRESSION.
  3. DO NOT WRAP COMPRESSION TERMINATION AROUND CORNERS.
  4. ALLOW 1/4" (6 mm) MINIMUM TO 1/2" MAXIMUM SPACING BETWEEN CONSECUTIVE LENGTHS OF TERMINATION BAR.

COUNTERFLASHING DETAIL



PROPOSED 4-TOWNHOUSE DEVELOPMENT FOR:  
LOT 933 (PARCEL-B) COLLIER CITY  
POMPANO BEACH, FL 33069

SEAL: AR 0017852  
LUIS LA ROSA

DRAWN:	Author
CHECKED:	Checker
DATE:	5/05/2025
SCALE:	AS NOTED
JOB. NO.:	024-021
SHEET:	
A 1.3	
OF:	SHEETS:

100% CONSTRUCTION DOCUMENTS

9/8/2025 3:52:20 PM

1/4" = 1'-0"

Revision

REV	DATE	BY
-----	------	----